

NOTE TOO:

MT Board of Oil & Gas Conservation

From:

Jerome F. Croteau ~~April 14, 2022~~ June 15, 2022

Board Chair & Members

My name is Jerry Croteau. I testified before this commission October 2020 and again this past April.

My concern of untitled minerals leaving the State of Montana presented a national security risk to our country.

That oil production within The State of Montana is leaving Montana untitled.

I shared with you The Board. Mine and my families inherited interest in oil production..

I have made a life time case study of O.&G. production in the Bakken Formation.

My families land on section 5. T158N. R103W. Williams Co. N.D.
Our south west corner touches,

The north east corner of section 9 T32N. R59E. Sheridan Co. M.T. .

1400' from the Cynthia 1 pumpJack.

Oil & Gas flowed from pumpjack to tank battery located sec.4. T158N. R103W. in N.D.

A gas line connected it too the Enbrige International Pipeline.

The Cynthia 1 Tank Battries labled Production Oil & Water both Sweet.

Had the Cynthia 1 as permitted produced from the Ratcliffe Formation.

The drill spacing would be ¹⁶⁰ ~~4,200~~ acres.

and the oil would have more than 1 percent Sulphur (Sour).

Now had the Cynthia 1 produced from a depth of 12,000'

The the well spacing would have been double, ³²⁰ ~~2,300~~ acres.

And in tresspass of my families land in North Dakota.

The oil would have been (sweet) from the Bakken Formation.

The depth of the well permitted is 12,000 feet.

The permitted production zone is of the Ratcliffe.

The production depth is from 7,740 feet to 7,940 feet.

Lineal Spacing Rules limit the proximity of wells from legally Subdivided Property boundaries.

Lineal Spacing Rules use depth of production for setbacks from legally Subdivided Boundary lines.

They protect adjoining properties rights.

Mr Chairman: I am asking you to certify by regulation that all minerals that leave the State of Montana is counted first.

Making rules of process, regulating activity, Inforcing rules implemented, is a primary function of this commission.

I would like to propose some rules that if enforced would insure fidelity to your process.

The rule should be made and enforced that the actual API Gravity of oil from well head be used to authenticate that oil produced is the same API Gavity of the geological formation stated on drilling permit.

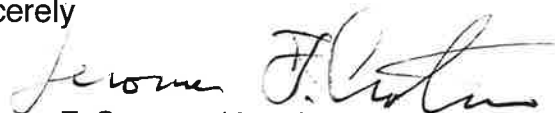
The rule should be made that production data collected at all O.&G. well heads be presented by a certified independent source to MBOGC or MBOGC agent.

Rule should be made that physical inspection, audit, and review of all active wells within Montana are in compliance of the rules above.

Good Fences make good neighbors

Mr Chairman: Thank you for this opportunity to speak today.

Sincerely


Jerome F. Croteau (Jerry)



PRODUCTION
ENERGY PARTNERS

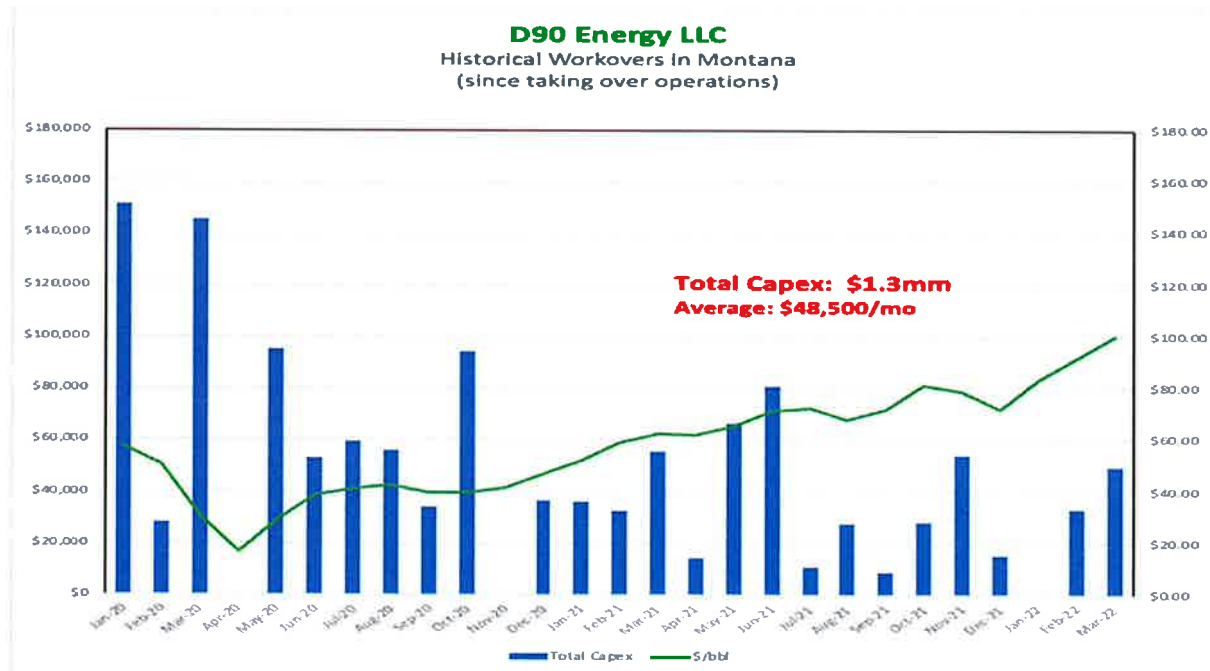
**D90 ENERGY –
- LLC**

TAQA USA – PRODUCTION ENERGY PARTNERS / D90 ENERGY 2020 TRANSACTION RECAP

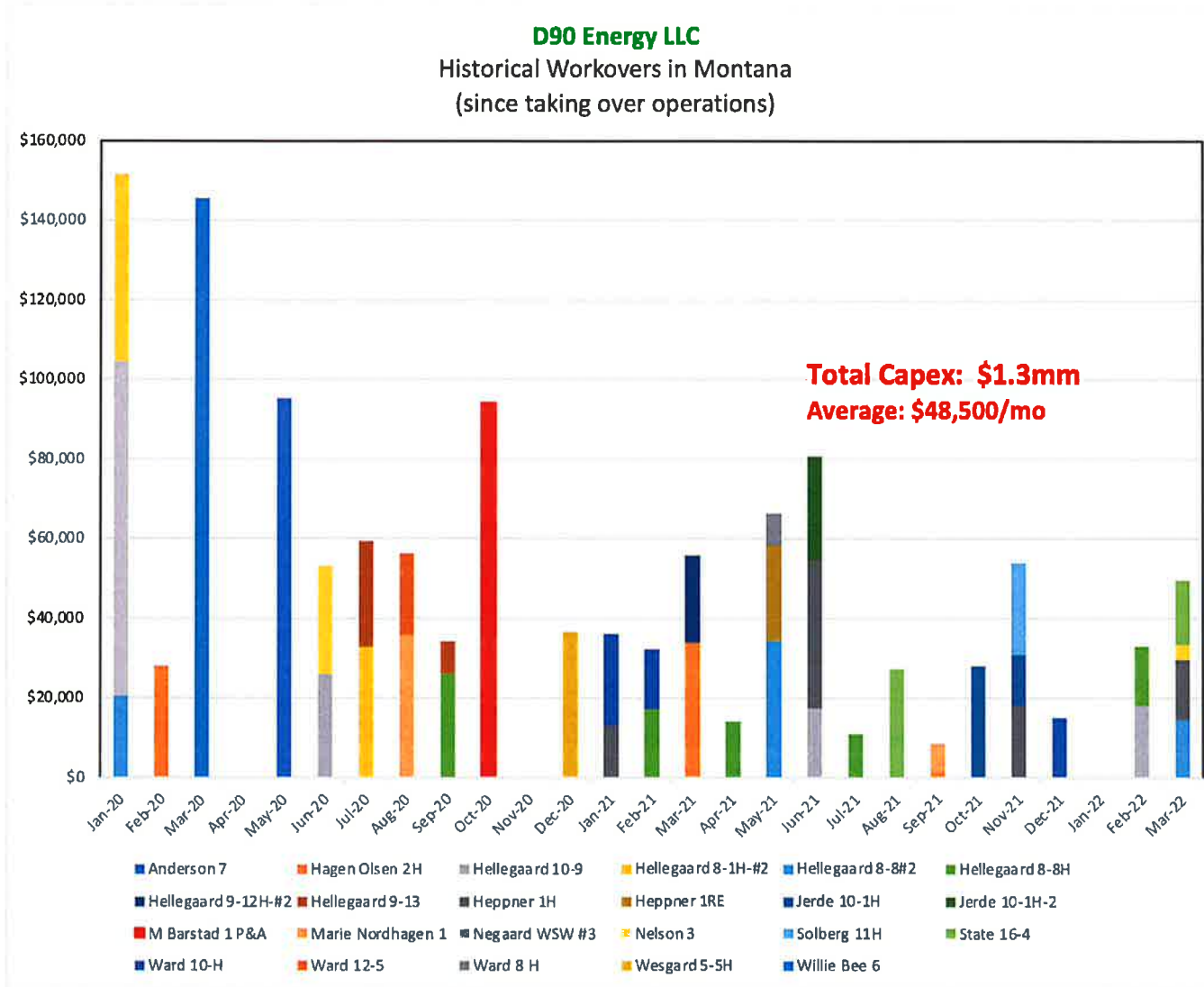
- Complete exit of US for Taqa, New basin for PEP / D90; strategic entry
- *PEP/ D90 striving for continuity*
 - Retained 100% of *employees*, Retained 100% of contract gaugers
 - *Maintained Plentywood office*
- *Well funded with bonds in place at Closing (January 30, 2020)*
 - *Multi-Well Bond:* ~~\$50,000~~ **\$100,000**
 - UIC Bond: \$369,750
 - *BLM Bond:* \$25,000
 - BIA Bond: \$75,000
- *221 total wells with 31 active injectors; 108 combined wells currently shut in*
- Preliminary plans (prior to oil price collapse 1Q2020)
 - *Return 5 wells to production in Flat Lake area during 2020*
 - Complete research on returning 10 additional wells in Dwyer, Goose Lake and Flat Lake fields
 - *Embark on review of remaining inactive producers to determine viability*
- Revised Plans after price collapse
 - Maintain current production and well count
 - Review inactive wells to determine viability
 - *Researching swapping of high electrical cost submersible pumps to conventional pumping units*
 - *Maintaining status-quo with regards to regulatory work and maintenance*

WHAT WAS DONE SINCE LAST HEARING

- Maintained current production and well count through active workover program
 - \$1.3mm spent since inception on workovers in total
 - Averaged 2-3 wells per month and \$48,500 per month in capital
 - Kept 21 wells active that had gone down with mechanical issues
 - **Plugged 1 well in Flat Lake East**
- This effort resulted in continuity of:
 - Royalty income to land owners
 - Tax revenue to local and state tax authorities



WHAT WAS DONE SINCE LAST HEARING; WELL ACTIVITY DETAIL



Severance Taxes Paid to MT 2020-Current

Taxing Period	Severance taxes paid
11 months 2020	\$293,900
1 st Quarter 2021	\$157,704
2 nd Quarter 2021	213,302
3 rd Quarter 2021	224,948
4 th Quarter 2021	<u>208,342</u>
Total 2021	\$804,296
1 st Quarter 2022	\$252,970
Total since taking over operations	\$1,349,566

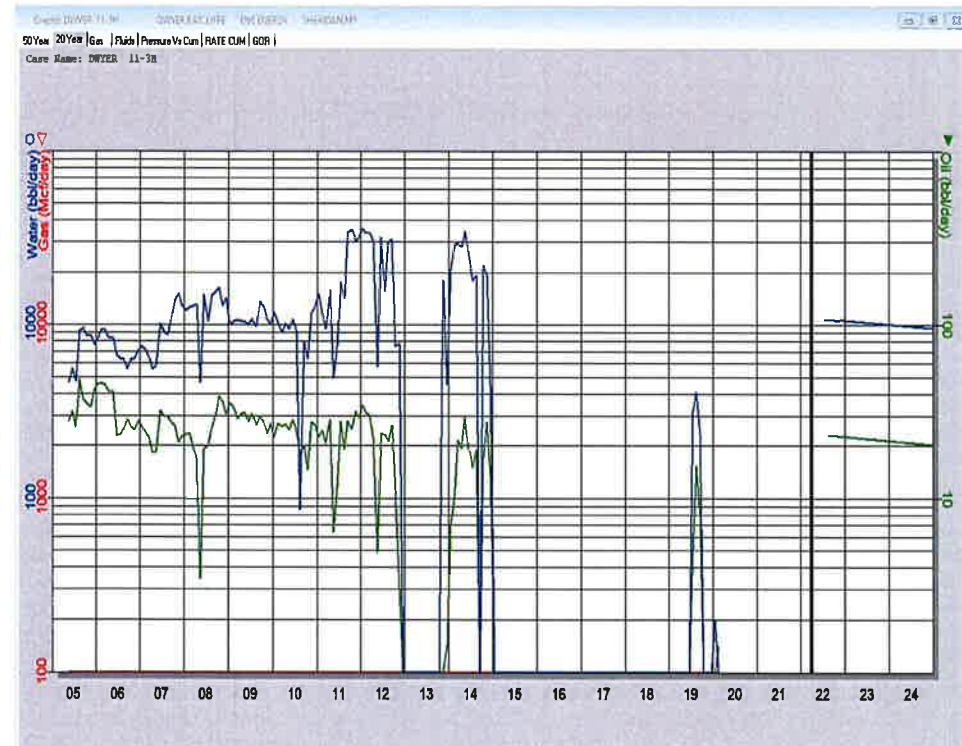
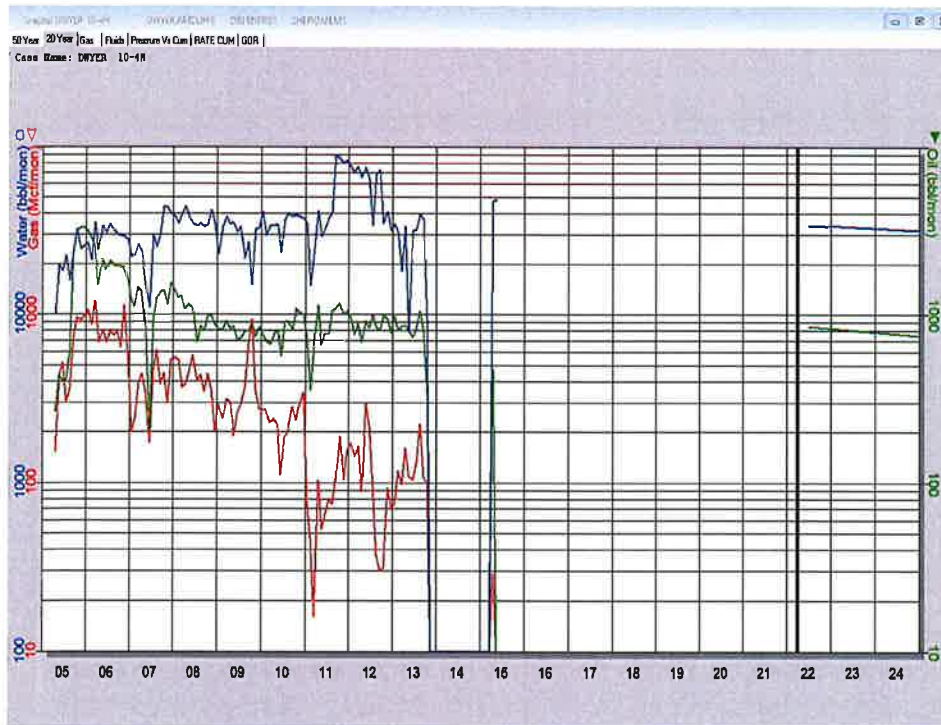


CURRENT PLANS FOR 2022

- **Take up where we left off before prices collapsed**
- **2022 budget has 5 wells to return to production**
 - **2 wells in Dwyer**
 - **2 wells in Flat Lake South**
 - **1 well in Goose Lake**
- **Projected capex: \$500,000**

CURRENT PLANS FOR 2022: Dwyer Field

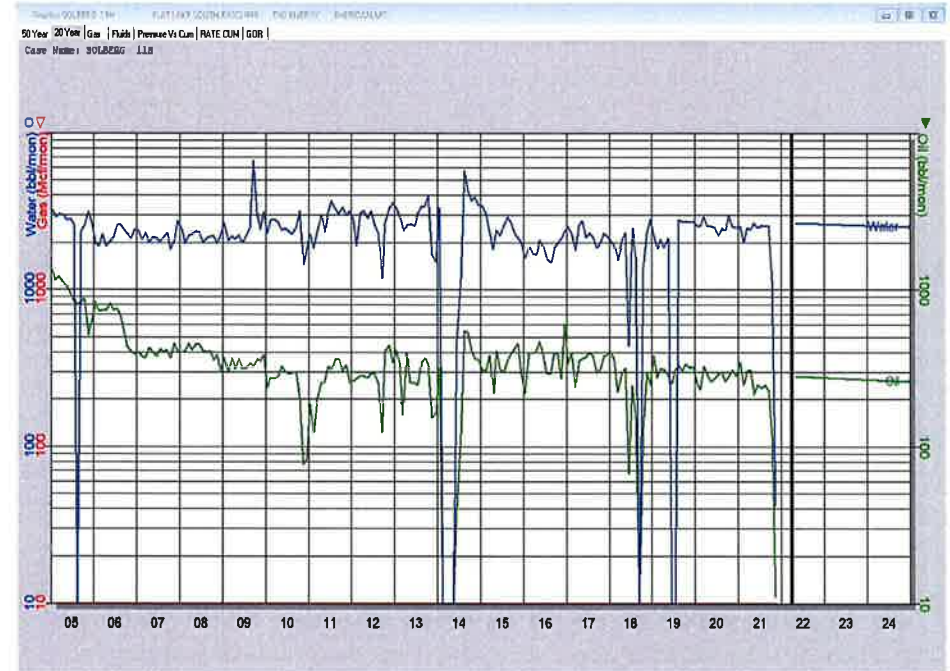
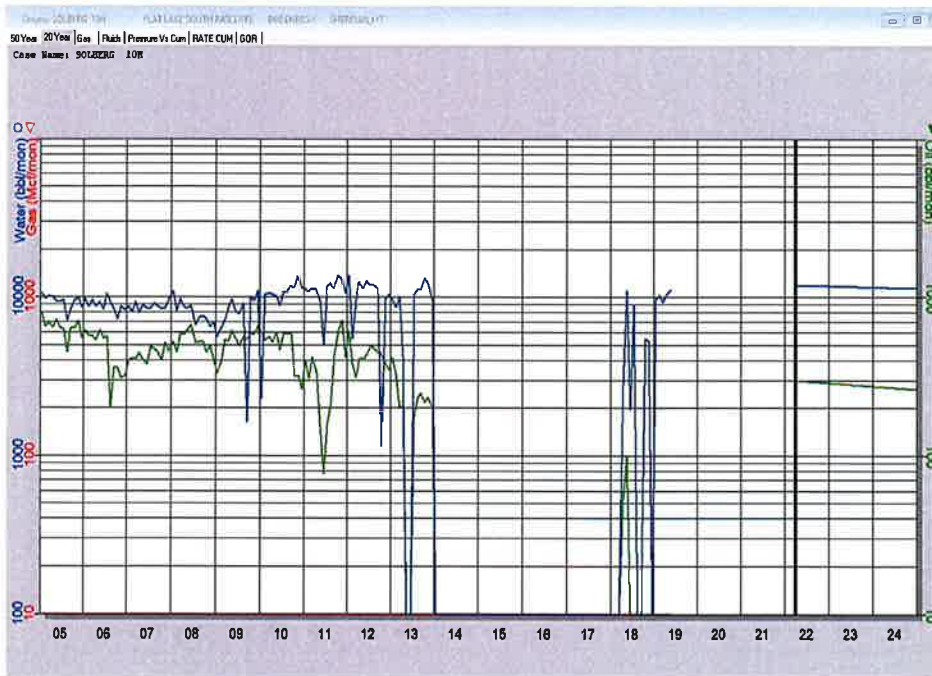
- Repair flowlines to allow 2 wells to be returned to production
- Also repair ESP pump
- > 50 bopd expected production





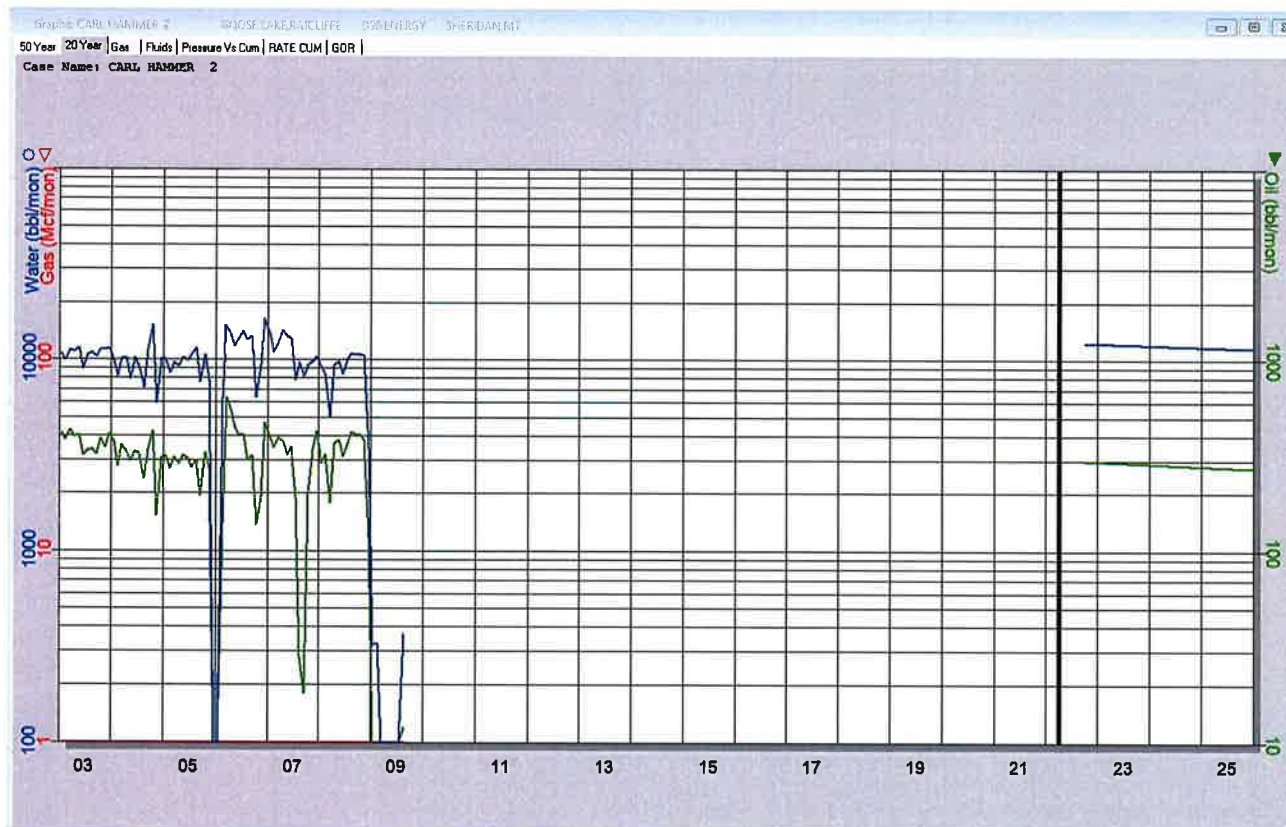
CURRENT PLANS FOR 2022: Flat Lake South

- Repair 2 wells with tbg leaks to return to production
- > 20 bopd expected production



CURRENT PLANS FOR 2022: Goose Lake

- Repair 1 wells with tbg leak to return to production and install pumping unit
- > 15 bopd expected production





CURRENT PLANS FOR 2023

- **Continue to take up where we left off before prices collapsed**
- **We see 5 wells to return to production, all in Flat Lake area**
- **2023 model has 5 - P&A's in Montana**
 - **DE Hejlm scheduled for February 2023**
 - **Have not finalized list of remaining 4 wells to P&A**
- **Projected capex**
 - **Return to production wells: \$400,000**
 - **P&A wells: \$300,000**

Shut-In Wells by Operator

871	A			Wells	SI	%	
D90 Energy, LLC				/ Well	199	134	67%

U1	UIC Limited Bond	\$369,750	\$9,243.75	40	19	48%
M1	Multiple Well Bond	\$100,000	\$632.91	158	114	72%
F1	Federal			1	1	100%

SI Two to Five Years	SI Five to Ten Years	SI Greater than Ten Years	Total
10	52	72	134

871/F1		Federal						Last Non-Zero	
871 F1	091-21795	Dwyer 4-2	32N-59E-19	NE NW	660 FNL, 1980 FWL	SI	OIL	11/30/2017	
871/M1		Multiple Well Bond						Last Non-Zero	
871 M1	091-21119	WSW 1D	37N-58E-4	NE SW	1863 FSL, 2488 FWL	C	WS	10/31/2012	
871 M1	091-21120	WSW 2-D	37N-58E-7	NE NE	453 FNL, 717 FEL	C	WS	-----	
871 M1	091-21785	Dwyer 6-2H	32N-58E-13	SW NW	2460 FNL, 840 FWL	SI	OIL	9/30/2014	
871 M1	091-21790	Dwyer 10-4H	32N-58E-13	SE SW	400 FSL, 2470 FWL	SI	OIL	5/31/2015	
871 M1	091-05039	Dwyer Unit 7-1H	32N-58E-13	SE NE	1980 FNL, 660 FEL	SI	OIL	5/31/2015	
871 M1	091-21177	Dwyer Unit 11-2	32N-58E-13	NW SE	1980 FSL, 1980 FEL	SI	OIL	5/31/2015	
871 M1	091-21176	Dwyer Unit 1002	32N-58E-13	NW SW	1980 FSL, 660 FWL	SI	OIL	12/31/2015	
871 M1	091-21530	Willie Bee 4	32N-58E-24	SW NE	2400 FNL, 1725 FEL	SI	OIL	5/31/2015	
871 M1	091-21502	Willie Bee 1	32N-58E-24	SW NE	2600 FNL, 1800 FEL	SI	OIL	3/31/2010	
871 M1	091-21498	Cynthia 1	32N-59E-9	NW SW SE	900 FSL, 900 FEL	SI	OIL	4/30/2013	
871 M1	091-05086	Loren Carlson 1	35N-58E-4	NW NW	671 FNL, 660 FWL	SI	OIL	-----	
871 M1	091-05085	Shoal 1	35N-58E-5	NW NE	668 FNL, 1980 FEL	SI	OIL	2/28/1993	
871 M1	091-21043	W.F. Burnison "A" 1	35N-58E-5	NW SW	1980 FSL, 858 FWL	SI	OIL	-----	
871 M1	091-05283	H.M. Oksa 4	35N-58E-5	NW SE	1980 FSL, 1980 FEL	SI	OIL	8/31/2010	
871 M1	091-21352	State A-3	35N-58E-16	C SE	1320 FSL, 1320 FEL	SI	OIL	4/30/2016	
871 M1	091-21155	C. Nelson 2	35N-58E-17	C SE	1320 FSL, 1320 FEL	AU	OIL	1/31/2008	
871 M1	091-05320	Clarence Nelson 1	35N-58E-17	SE NE	1980 FNL, 660 FEL	SI	OIL	4/30/2013	
871 M1	091-05315	E. Reed 2	36N-58E-21	NW SW	1780 FSL, 818 FWL	SI	OIL	6/30/2006	
871 M1	091-21056	Keldsen 4	36N-58E-27	NW SE	2180 FSL, 1980 FEL	SI	OIL	2/29/1996	
871 M1	091-05105	Keldsen 3	36N-58E-27	NW SW	1880 FSL, 560 FWL	SI	OIL	1/31/1999	
871 M1	091-21007	A.E. Lagerquist 1	36N-58E-27	NW NE	660 FNL, 2070 FEL	SI	OIL	-----	
871 M1	091-05310	Sig Lagerquist 1	36N-58E-27	NW NW	801 FNL, 801 FWL	SI	OIL	10/31/2016	
871 M1	091-05103	Keldsen 2H-RE	36N-58E-28	NW SE	1739 FSL, 1983 FEL	SI	OIL	9/30/2013	
871 M1	091-05106	Alvstad 1	36N-58E-28	NW SW	2032 FSL, 610 FWL	SI	OIL	8/31/2010	
871 M1	091-21017	Carl Hammer 2	36N-58E-28	C NW	1320 FNL, 1320 FWL	SI	OIL	8/31/2009	
871 M1	091-05286	Hammer 1H-RE	36N-58E-28	NW NE	860 FNL, 1680 FEL	SI	OIL	4/30/2013	
871 M1	091-21805	NGLU 16-28H	36N-58E-28	SE SE	557 FSL, 757 FEL	SI	OIL	3/31/2007	
871 M1	091-21068	Arne Haugen 1-29	36N-58E-29	C NE	1320 FNL, 1320 FEL	SI	OIL	12/31/2006	
871 M1	091-05257	Reed 1	36N-58E-29	NW SE	1919 FSL, 1880 FEL	SI	OIL	8/31/2010	
871 M1	091-05100	Johnsboen 1	36N-58E-32	NW NE	710 FNL, 2180 FEL	SI	OIL	7/31/2001	
871 M1	091-05274	Keldsen-Bergland 1	36N-58E-33	NW NW	760 FNL, 660 FWL	SI	OIL	11/30/2000	
871 M1	091-05099	Keldsen 1	36N-58E-33	NW NE	859 FNL, 1928 FEL	SI	OIL	6/30/1998	
871 M1	091-05092	S. & T. Lagerquist 1	36N-58E-33	NW SE	1980 FSL, 1880 FEL	SI	OIL	-----	
871 M1	091-21606	Joyes FLB 1	37N-56E-12	NE SW	1980 FSL, 1500 FWL	SI	OIL	1/31/2010	
871 M1	091-21612	Shirley Joyes 1	37N-56E-12	SE NW	1980 FNL, 1980 FWL	SI	OIL	10/31/2010	
871 M1	091-21123	Tufton 2	37N-56E-13	NW SE NE	1540 FNL, 991 FEL	SI	OIL	10/31/1988	
871 M1	091-21114	Tufton 1	37N-56E-13	NW SE NW	1853 FNL, 1853 FWL	SI	OIL	5/31/2015	
871 M1	091-21924	State 16-12H	37N-56E-16	NW SW	2365 FSL, 260 FWL	SI	OIL	5/31/2013	
871 M1	091-05312	C. Semingson 1	37N-57E-8	C SE	1320 FSL, 1320 FEL	SI	OIL	8/31/2012	
871 M1	091-05167	M. Hellegaard 1	37N-57E-8	SE NE	2080 FNL, 541 FEL	SI	OIL	9/30/2014	
871 M1	091-21774	Hellegaard 5H	37N-57E-8	SW NE	1943 FNL, 1980 FEL	SI	OIL	2/28/2015	
871 M1	091-21730	McKinnon 3H	37N-57E-9	SE SE	660 FSL, 848 FEL	SI	OIL	12/31/2015	
871 M1	091-05252	O. Hellegaard 2	37N-57E-10	NE SE	1980 FSL, 660 FEL	SI	OIL	9/30/2009	
871 M1	091-21876	Heppner 10-11H	37N-57E-10	NE SW	1583 FSL, 3061 FEL	SI	OIL	3/31/2013	

871 M1	091-21345	N. Ward 7	37N-57E-11	SW NW	1982 FNL, 660 FWL	SI	OIL	2/28/1997
871 M1	091-21279	Nels A. Ward 5	37N-57E-11	SW NE	1980 FNL, 1980 FEL	SI	OIL	3/31/1988
871 M1	091-05162	E. Hansen 2-1	37N-57E-11	NE SE	1980 FSL, 660 FEL	SI	OIL	10/31/1994
871 M1	091-05163	E. Hansen 2-2	37N-57E-11	NE SW	1980 FSL, 1980 FWL	SI	OIL	11/30/1995
871 M1	091-05164	Nels Ward 3	37N-57E-11	NE NE	489 FNL, 681 FEL	SI	OIL	4/30/1986
871 M1	091-21901	Flat Lake 11-13H	37N-57E-11	SW SW	480 FSL, 280 FWL	SI	OIL	10/31/2013
871 M1	091-21728	Ward 9H	37N-57E-11	S2 NE	1980 FNL, 1320 FEL	SI	OIL	11/30/2014
871 M1	091-05171	Nels A. Ward 1	37N-57E-12	NE NW	659 FNL, 2056 FWL	SI	OIL	1/31/1986
871 M1	091-21342	N. Ward 6	37N-57E-12	SW NW	1982 FNL, 559 FWL	SI	OIL	3/31/1996
871 M1	091-21800	Ward 11	37N-57E-12	NE NW	860 FNL, 2230 FWL	SI	OIL	8/31/2009
871 M1	091-21380	Leininger-Church 2	37N-57E-12	SW SE	661 FSL, 1982 FEL	SI	OIL	3/31/1993
871 M1	091-05150	E. Hjelm 1	37N-57E-13	NE NE	660 FNL, 660 FEL	SI	OIL	7/31/2002
871 M1	091-21374	C. Solberg 6	37N-57E-13	SW SE	660 FSL, 1984 FEL	SI	OIL	12/31/1997
871 M1	091-05145	C. Solberg 1	37N-57E-13	NE SE	1980 FSL, 666 FEL	SI	OIL	-----
871 M1	091-21905	Hjelm 13-1H	37N-57E-13	NE NE	480 FNL, 290 FEL	SI	OIL	5/31/2013
871 M1	091-21900	Knudson 14-15	37N-57E-14	SW SE	255 FSL, 2905 FWL	TA	OIL	12/31/2014
871 M1	091-21884	Krowen 14-4H	37N-57E-14	NW NW	880 FNL, 250 FWL	SI	OIL	9/30/2013
871 M1	091-05156	A. Krowen 2	37N-57E-14	NE NW	510 FNL, 1905 FWL	TA	OIL	11/30/1996
871 M1	091-21796	Knudson 5H	37N-57E-14	SW SW	491 FSL, 1061 FWL	SI	OIL	4/30/2013
871 M1	091-21359	A. Krowen 3	37N-57E-14	SW NW	1984 FNL, 661 FWL	SI	OIL	-----
871 M1	091-21829	Hellegaard 7H	37N-57E-15	NW SE	2421 FSL, 1473 FEL	TA	OIL	1/31/2009
871 M1	091-05262	C.P. Jerde 2	37N-57E-15	NE SW	2120 FSL, 1840 FWL	SI	OIL	8/31/2012
871 M1	091-21732	Jerde 3H	37N-57E-15	NW NW	800 FNL, 660 FWL	SI	OIL	9/30/2017
871 M1	091-21830	Hellegaard 8H	37N-57E-15	NW NE	1250 FNL, 1531 FEL	SI	OIL	5/31/2015
871 M1	091-05275	Joyes-State 2	37N-57E-16	NE NE	635 FNL, 660 FEL	SI	OIL	9/30/2014
871 M1	091-05276	Joyes-State 1	37N-57E-16	NE SE	1983 FSL, 660 FEL	SI	OIL	11/30/2011
871 M1	091-21734	Joyes State 5H	37N-57E-16	NE NE	660 FNL, 1180 FEL	SI	OIL	10/31/2010
871 M1	091-05287	Joyes-State 3	37N-57E-16	NE SW	1980 FSL, 1980 FWL	SI	OIL	6/30/1988
871 M1	091-21883	Bolke 18-4H	37N-57E-18	NW NW	710 FNL, 230 FWL	SI	OIL	6/30/2013
871 M1	091-05307	Arnold Joyes 1	37N-57E-21	NE SE	2180 FSL, 661 FEL	SI	OIL	-----
871 M1	091-05277	E. Negaard "B" 1	37N-57E-21	NE NE	660 FNL, 660 FEL	SI	OIL	-----
871 M1	091-05268	E. Negaard A-1	37N-57E-22	NE NW	660 FNL, 1980 FWL	SI	OIL	-----
871 M1	091-05288	E. Drangstveit "A" 1	37N-57E-22	NE SW	1980 FSL, 1980 FWL	SI	OIL	-----
871 M1	091-21743	Mayhew 1H	37N-57E-23	NE SE	1450 FSL, 760 FEL	SI	OIL	4/30/2012
871 M1	091-21878	Krowen 23-12H	37N-57E-23	SW SW	1115 FSL, 230 FWL	SI	OIL	11/30/2011
871 M1	091-21354	Haugen 25-6	37N-57E-25	SE NW	2040 FNL, 1980 FWL	SI	OIL	3/31/1991
871 M1	091-21384	Haugen 26-8	37N-57E-26	SE NE	1835 FNL, 661 FEL	SI	OIL	10/31/2015
871 M1	091-05182	Bertha Ekness 1	37N-58E-3	NE SE	1980 FSL, 512 FEL	SI	OIL	9/30/2012
871 M1	091-05196	E. Westgard Unit 3-2	37N-58E-3	NE	1575 FNL, 512 FEL	SI	OIL	10/31/1993
871 M1	091-05193	E. Westgard 3 Unit 1	37N-58E-3	NE NW	1525 FNL, 1922 FWL	SI	OIL	4/30/2007
871 M1	091-21333	O. Anderson 2	37N-58E-3	SW NW	2888 FNL, 660 FWL	SI	OIL	4/30/2007
871 M1	091-21337	M. Eggen 2	37N-58E-4	SW SE	560 FSL, 1981 FEL	SI	OIL	3/31/2013
871 M1	091-05186	M. Eggen 1	37N-58E-4	NE SE	1980 FSL, 809 FEL	SI	OIL	1/31/2013
871 M1	091-21277	M. Eggen Unit 2	37N-58E-4	SW NE	3300 FSL, 1980 FEL	TA	OIL	10/31/1997
871 M1	091-05192	State 1	37N-58E-4	NE NW	1577 FNL, 1976 FWL	SI	OIL	1/31/2016
871 M1	091-21341	Montana State 3H	37N-58E-4	SW NW	2993 FNL, 729 FWL	SI	OIL	1/31/2015
871 M1	091-21704	Eggen 1H	37N-58E-4	NE SE	2501 FSL, 1301 FEL	SI	OIL	8/31/2019
871 M1	091-05184	A. Anderson 2	37N-58E-5	NE SE	1980 FSL, 662 FEL	SI	OIL	7/31/2002
871 M1	091-05194	A. Anderson 3	37N-58E-5	NE NW	1630 FNL, 1856 FWL	SI	OIL	5/31/1996
871 M1	091-21349	A. Anderson 6	37N-58E-5	SW NW	3300 FSL, 661 FWL	SI	OIL	11/30/1998
871 M1	091-21739	Anderson 8H	37N-58E-5	NW	1630 FNL, 1413 FWL	SI	OIL	11/30/2011
871 M1	091-05179	A. Anderson 1	37N-58E-6	NE SE	1980 FSL, 659 FEL	SI	OIL	2/28/2003
871 M1	091-21367	I. Metvedt 2	37N-58E-6	SW SE	573 FSL, 2377 FEL	SI	OIL	6/30/1989
871 M1	091-05170	E. Eggen Unit 1	37N-58E-7	NE NW	660 FNL, 1878 FWL	SI	OIL	11/30/1994
871 M1	091-21379	B.D. Knudson 3	37N-58E-7	SW SE	660 FSL, 1982 FEL	SI	OIL	7/31/1987
871 M1	091-21705	Haugen 1H	37N-58E-7	SE SW	531 FSL, 1750 FWL	SI	OIL	5/31/2018
871 M1	091-21338	E. Eggen Unit 3	37N-58E-7	SW NW	1984 FNL, 660 FWL	SI	OIL	5/31/2018
871 M1	091-21361	E. Westgaard 4-2	37N-58E-8	NE NW	660 FNL, 1982 FWL	SI	OIL	7/31/1994
871 M1	091-05173	B. Eckness 1	37N-58E-10	NE NE	660 FNL, 512 FEL	SI	OIL	9/30/2012
871 M1	091-05144	A. Krowen Unit 1	37N-58E-18	NE SE	1933 FSL, 707 FEL	SI	OIL	5/31/2018
871 M1	091-05146	P. Solberg 1	37N-58E-18	NE SW	1905 FSL, 1989 FWL	TA	OIL	8/31/1992

871 M1	091-05149	Haugen 2-1	37N-58E-18	SW NW	1980 FNL, 659 FWL	SI	OIL	5/31/2018
871 M1	091-21375	A. Krowen 2	37N-58E-18	SW SE	660 FSL, 1981 FEL	SI	OIL	5/31/2018
871 M1	091-21095	P. Solberg 6	37N-58E-19	NE NW	660 FNL, 1982 FWL	SI	OIL	12/31/1998
871 M1	091-21105	C. Solberg 5	37N-58E-19	NE SW	2228 FSL, 2224 FWL	SI	OIL	6/30/2009
871 M1	091-21415	P. Solberg 8	37N-58E-19	SW NW	1980 FNL, 660 FWL	SI	OIL	4/30/1995
871 M1	091-21101	Ferguson 2	37N-58E-20	NE SE	1980 FSL, 660 FEL	SI	OIL	4/30/2013
871 M1	091-21794	Solberg 12H	37N-58E-30	NW NE	732 FNL, 1980 FEL	SI	OIL	4/30/2013
871 M1	091-21082	C. Solberg 4	37N-58E-30	NE NW	661 FNL, 1907 FWL	SI	OIL	4/30/2013
871 M1	091-21860	Dwyer 23-8H	32N-58E-23	SE NE	1700 FNL, 230 FEL	C	DH	-----
871/U1	UIC Limited Bond							<i>Last Non-Zero</i>
871 U1	091-21491	Dwyer Unit 7-W03	32N-58E-13	NW NE	1300 FNL, 1980 FEL	IA	SWD	7/31/2017
871 U1	091-05021	Dwyer 3-1	32N-59E-19	SE SE	660 FSL, 660 FEL	AU	SWD	9/30/2015
871 U1	091-21373	E. Hjelm 3	37N-57E-13	SW NW	1985 FNL, 660 FWL	IA	SWD	12/31/2017
871 U1	091-21793	Dwyer 2-2	32N-59E-19	NW NE	990 FNL, 1680 FEL	PI	OIL	3/31/2011
871 U1	091-21716	Hellegaard 4H	37N-57E-10	SW SE	680 FSL, 1880 FEL	PI	OIL	3/31/2012
871 U1	091-21350	E. Hansen 2-3	37N-57E-11	SW SE	760 FSL, 2382 FEL	PI	OIL	4/30/1988
871 U1	091-21378	B.D. Knudson 4	37N-58E-7	NE SE	1980 FSL, 660 FEL	SI	OIL	7/31/1988
871 U1	091-21278	P. Solberg 7	37N-58E-18	SW SW	660 FSL, 660 FWL	PI	OIL	-----
871 U1	091-21288	Dwyer Unit 702	32N-58E-13	SW NE	1980 FNL, 1980 FEL	IA	EOR	8/31/2015
871 U1	091-05089	Hjelm 1	36N-58E-32	NW SE	1780 FSL, 1930 FEL	IA	EOR	3/31/2012
871 U1	091-05160	Nels A. Ward 2	37N-57E-12	NE SW	1980 FSL, 1907 FWL	IA	EOR	11/30/2015
871 U1	091-21113	Joyes State 4	37N-57E-16	NE NW	660 FNL, 1940 FWL	AU	EOR	8/31/2012
871 U1	091-05181	O. Anderson 1	37N-58E-3	NE SW	1980 FSL, 1780 FWL	IA	EOR	11/30/2015
871 U1	091-05195	M. Eggen Unit 1	37N-58E-4	NE NE	1416 FNL, 660 FEL	IA	EOR	12/31/2015
871 U1	091-05183	State 2	37N-58E-4	NE SW	2005 FSL, 1976 FWL	IA	EOR	12/31/2015
871 U1	091-05188	A. Anderson 1	37N-58E-5	NE SW	1980 FSL, 2180 FWL	IA	EOR	10/31/2007
871 U1	091-05191	A. Anderson 4	37N-58E-5	NE NE	1506 FNL, 660 FEL	IA	EOR	11/30/2015
871 U1	091-05161	Haugen 2-3	37N-58E-7	NE SW	1980 FSL, 1979 FWL	IA	EOR	2/29/2012
871 U1	091-05174	E. Westgaard 4-1	37N-58E-8	NE NE	660 FNL, 660 FEL	AU	EOR	-----

1 Operator(s) Included in Report

Shut-In Wells by Operator

4/16/2020

3:38:31 PM

599 A

TAQA USA, Inc.

/ Well	Wells 199	SI 127	% 64%
--------	---------------------	------------------	-----------------

U1	UIC Limited Bond	\$369,750	\$10,564.29	35	15	43%
M1	Multiple Well Bond	\$50,000	\$308.64	162	111	69%
F1	Federal			2	1	50%

SI Two to Five Years	SI Five to Ten Years	SI Greater than Ten Years	Total
24	42	61	127

						<i>Last Non-Zero</i>
599/F1	Federal					
599 F1	25091217930000	Dwyer 2-2	32N-59E-19	NW NE	990 FNL, 1680 FEL	3/31/2011
599/M1	Multiple Well Bond					<i>Last Non-Zero</i>
599 M1	25091050390000	Dwyer Unit 7-1H	32N-58E-13	SE NE	1980 FNL, 660 FEL	5/31/2015
599 M1	25091211760000	Dwyer Unit 1002	32N-58E-13	NW SW	1980 FSL, 660 FWL	12/31/2015
599 M1	25091211770000	Dwyer Unit 11-2	32N-58E-13	NW SE	1980 FSL, 1980 FEL	5/31/2015
599 M1	25091217850000	Dwyer 6-2H	32N-58E-13	SW NW	2460 FNL, 840 FWL	9/30/2014
599 M1	25091217900000	Dwyer 10-4H	32N-58E-13	SE SW	400 FSL, 2470 FWL	5/31/2015
599 M1	25091218600000	Dwyer 23-8H	32N-58E-23	SE NE	1700 FNL, 230 FEL	-----
599 M1	25091215020000	Willie Bee 1	32N-58E-24	SW NE	2600 FNL, 1800 FEL	3/31/2010
599 M1	25091215300000	Willie Bee 4	32N-58E-24	SW NE	2400 FNL, 1725 FEL	5/31/2015
599 M1	25091214980000	Cynthia 1	32N-59E-9	NW SW SE	900 FSL, 900 FEL	4/30/2013
599 M1	25091050860000	Loren Carlson 1	35N-58E-4	NW NW	671 FNL, 660 FWL	-----
599 M1	25091050850000	Shoal 1	35N-58E-5	NW NE	668 FNL, 1980 FEL	2/28/1993
599 M1	25091210430000	W.F. Burnison "A" 1	35N-58E-5	NW SW	1980 FSL, 858 FWL	-----
599 M1	25091052830000	H.M. Oksa 4	35N-58E-5	NW SE	1980 FSL, 1980 FEL	8/31/2010
599 M1	25091213520000	State A-3	35N-58E-16	C SE	1320 FSL, 1320 FEL	4/30/2016
599 M1	25091053200000	Clarence Nelson 1	35N-58E-17	SE NE	1980 FNL, 660 FEL	4/30/2013
599 M1	25091211550000	C. Nelson 2	35N-58E-17	C SE	1320 FSL, 1320 FEL	1/31/2008
599 M1	25091053150000	E. Reed 2	36N-58E-21	NW SW	1780 FSL, 818 FWL	6/30/2006
599 M1	25091210070000	A.E. Lagerquist 1	36N-58E-27	NW NE	660 FNL, 2070 FEL	-----
599 M1	25091053100000	Sig Lagerquist 1	36N-58E-27	NW NW	801 FNL, 801 FWL	10/31/2016
599 M1	25091210560000	Keldsen 4	36N-58E-27	NW SE	2180 FSL, 1980 FEL	2/29/1996
599 M1	25091051050000	Keldsen 3	36N-58E-27	NW SW	1880 FSL, 560 FWL	1/31/1999
599 M1	25091051030000	Keldsen 2H-RE	36N-58E-28	NW SE	1739 FSL, 1983 FEL	9/30/2013
599 M1	25091052860000	Hammer 1H-RE	36N-58E-28	NW NE	860 FNL, 1680 FEL	4/30/2013
599 M1	25091218050000	NGLU 16-28H	36N-58E-28	SE SE	557 FSL, 757 FEL	3/31/2007
599 M1	25091210170000	Carl Hammer 2	36N-58E-28	C NW	1320 FNL, 1320 FWL	8/31/2009
599 M1	25091051060000	Alvstad 1	36N-58E-28	NW SW	2032 FSL, 610 FWL	8/31/2010
599 M1	25091210680000	Arne Haugen 1-29	36N-58E-29	C NE	1320 FNL, 1320 FEL	12/31/2006
599 M1	25091052570000	Reed 1	36N-58E-29	NW SE	1919 FSL, 1880 FEL	8/31/2010
599 M1	25091051000000	Johnsboen 1	36N-58E-32	NW NE	710 FNL, 2180 FEL	7/31/2001
599 M1	25091050990000	Keldsen 1	36N-58E-33	NW NE	859 FNL, 1928 FEL	6/30/1998
599 M1	25091052740000	Keldsen-Bergland 1	36N-58E-33	NW NW	760 FNL, 660 FWL	11/30/2000
599 M1	25091050920000	S. & T. Lagerquist 1	36N-58E-33	NW SE	1980 FSL, 1880 FEL	-----
599 M1	25091216060000	Joyes FLB 1	37N-56E-12	NE SW	1980 FSL, 1500 FWL	1/31/2010
599 M1	25091216120000	Shirley Joyes 1	37N-56E-12	SE NW	1980 FNL, 1980 FWL	10/31/2010
599 M1	25091211140000	Tufton 1	37N-56E-13	NW SE NW	1853 FNL, 1853 FWL	5/31/2015
599 M1	25091211230000	Tufton 2	37N-56E-13	NW SE NE	1540 FNL, 991 FEL	10/31/1988
599 M1	25091219240000	State 16-12H	37N-56E-16	NW SW	2365 FSL, 260 FWL	5/31/2013
599 M1	25091053120000	C. Semingson 1	37N-57E-8	C SE	1320 FSL, 1320 FEL	8/31/2012
599 M1	25091217740000	Hellegaard 5H	37N-57E-8	SW NE	1943 FNL, 1980 FEL	2/28/2015
599 M1	25091051670000	M. Hellegaard 1	37N-57E-8	SE NE	2080 FNL, 541 FEL	9/30/2014
599 M1	25091217300000	McKinnon 3H	37N-57E-9	SE SE	660 FSL, 848 FEL	12/31/2015
599 M1	25091052520000	O. Hellegaard 2	37N-57E-10	NE SE	1980 FSL, 660 FEL	9/30/2009
599 M1	25091217160000	Hellegaard 4H	37N-57E-10	SW SE	680 FSL, 1880 FEL	3/31/2012
599 M1	25091218760000	Heppner 10-11H	37N-57E-10	NE SW	1583 FSL, 3061 FEL	3/31/2013

599 M1	25091212790000	Nels A. Ward 5	37N-57E-11	SW NE	1980 FNL, 1980 FEL	3/31/1988
599 M1	25091219010000	Flat Lake 11-13H	37N-57E-11	SW SW	480 FSL, 280 FWL	10/31/2013
599 M1	25091051630000	E. Hansen 2-2	37N-57E-11	NE SW	1980 FSL, 1980 FWL	11/30/1995
599 M1	25091051640000	Nels Ward 3	37N-57E-11	NE NE	489 FNL, 681 FEL	4/30/1986
599 M1	25091051620000	E. Hansen 2-1	37N-57E-11	NE SE	1980 FSL, 660 FEL	10/31/1994
599 M1	25091213450000	N. Ward 7	37N-57E-11	SW NW	1982 FNL, 660 FWL	2/28/1997
599 M1	25091213500000	E. Hansen 2-3	37N-57E-11	SW SE	760 FSL, 2382 FEL	4/30/1988
599 M1	25091217280000	Ward 9H	37N-57E-11	S2 NE	1980 FNL, 1320 FEL	11/30/2014
599 M1	25091213420000	N. Ward 6	37N-57E-12	SW NW	1982 FNL, 559 FWL	3/31/1996
599 M1	25091218000000	Ward 11	37N-57E-12	NE NW	860 FNL, 2230 FWL	8/31/2009
599 M1	25091051710000	Nels A. Ward 1	37N-57E-12	NE NW	659 FNL, 2056 FWL	1/31/1986
599 M1	25091213800000	Leininger-Church 2	37N-57E-12	SW SE	661 FSL, 1982 FEL	3/31/1993
599 M1	25091051500000	E. Hjelm 1	37N-57E-13	NE NE	660 FNL, 660 FEL	7/31/2002
599 M1	25091219050000	Hjelm 13-1H	37N-57E-13	NE NE	480 FNL, 290 FEL	5/31/2013
599 M1	25091051450000	C. Solberg 1	37N-57E-13	NE SE	1980 FSL, 666 FEL	-----
599 M1	25091213740000	C. Solberg 6	37N-57E-13	SW SE	660 FSL, 1984 FEL	12/31/1997
599 M1	25091051560000	A. Krowen 2	37N-57E-14	NE NW	510 FNL, 1905 FWL	11/30/1996
599 M1	25091219000000	Knudson 14-15	37N-57E-14	SW SE	255 FSL, 2905 FWL	12/31/2014
599 M1	25091218840000	Krowen 14-4H	37N-57E-14	NW NW	880 FNL, 250 FWL	9/30/2013
599 M1	25091217960000	Knudson 5H	37N-57E-14	SW SW	491 FSL, 1061 FWL	4/30/2013
599 M1	25091213590000	A. Krowen 3	37N-57E-14	SW NW	1984 FNL, 661 FWL	-----
599 M1	25091217320000	Jerde 3H	37N-57E-15	NW NW	800 FNL, 660 FWL	9/30/2017
599 M1	25091218290000	Hellegaard 7H	37N-57E-15	NW SE	2421 FSL, 1473 FEL	1/31/2009
599 M1	25091218300000	Hellegaard 8H	37N-57E-15	NW NE	1250 FNL, 1531 FEL	5/31/2015
599 M1	25091052620000	C.P. Jerde 2	37N-57E-15	NE SW	2120 FSL, 1840 FWL	8/31/2012
599 M1	25091052760000	Joyes-State 1	37N-57E-16	NE SE	1983 FSL, 660 FEL	11/30/2011
599 M1	25091052870000	Joyes-State 3	37N-57E-16	NE SW	1980 FSL, 1980 FWL	6/30/1988
599 M1	25091052750000	Joyes-State 2	37N-57E-16	NE NE	635 FNL, 660 FEL	9/30/2014
599 M1	25091217340000	Joyes State 5H	37N-57E-16	NE NE	660 FNL, 1180 FEL	10/31/2010
599 M1	25091218830000	Bolke 18-4H	37N-57E-18	NW NW	710 FNL, 230 FWL	6/30/2013
599 M1	25091053070000	Arnold Joyes 1	37N-57E-21	NE SE	2180 FSL, 661 FEL	-----
599 M1	25091052770000	E. Negaard "B" 1	37N-57E-21	NE NE	660 FNL, 660 FEL	-----
599 M1	25091052680000	E. Negaard A-1	37N-57E-22	NE NW	660 FNL, 1980 FWL	-----
599 M1	25091052880000	E. Drangstveit "A" 1	37N-57E-22	NE SW	1980 FSL, 1980 FWL	-----
599 M1	25091217430000	Mayhew 1H	37N-57E-23	NE SE	1450 FSL, 760 FEL	4/30/2012
599 M1	25091218780000	Krowen 23-12H	37N-57E-23	SW SW	1115 FSL, 230 FWL	11/30/2011
599 M1	25091213540000	Haugen 25-6	37N-57E-25	SE NW	2040 FNL, 1980 FWL	3/31/1991
599 M1	25091213840000	Haugen 26-8	37N-57E-26	SE NE	1835 FNL, 661 FEL	10/31/2015
599 M1	25091213330000	O. Anderson 2	37N-58E-3	SW NW	2888 FNL, 660 FWL	4/30/2007
599 M1	25091051960000	E. Westgard Unit 3-2	37N-58E-3	NE	1575 FNL, 512 FEL	10/31/1993
599 M1	25091051930000	E. Westgard 3 Unit 1	37N-58E-3	NE NW	1525 FNL, 1922 FWL	4/30/2007
599 M1	25091051820000	Bertha Ekness 1	37N-58E-3	NE SE	1980 FSL, 512 FEL	9/30/2012
599 M1	25091051920000	State 1	37N-58E-4	NE NW	1577 FNL, 1976 FWL	1/31/2016
599 M1	25091051860000	M. Eggen 1	37N-58E-4	NE SE	1980 FSL, 809 FEL	1/31/2013
599 M1	25091211190000	WSW 1D	37N-58E-4	NE SW	1863 FSL, 2488 FWL	10/31/2012
599 M1	25091212770000	M. Eggen Unit 2	37N-58E-4	SW NE	3300 FSL, 1980 FEL	10/31/1997
599 M1	25091213370000	M. Eggen 2	37N-58E-4	SW SE	560 FSL, 1981 FEL	3/31/2013
599 M1	25091213410000	Montana State 3H	37N-58E-4	SW NW	2993 FNL, 729 FWL	1/31/2015
599 M1	25091217390000	Anderson 8H	37N-58E-5	NW	1630 FNL, 1413 FWL	11/30/2011
599 M1	25091051840000	A. Anderson 2	37N-58E-5	NE SE	1980 FSL, 662 FEL	7/31/2002
599 M1	25091051940000	A. Anderson 3	37N-58E-5	NE NW	1630 FNL, 1856 FWL	5/31/1996
599 M1	25091213490000	A. Anderson 6	37N-58E-5	SW NW	3300 FSL, 661 FWL	11/30/1998
599 M1	25091051790000	A. Anderson 1	37N-58E-6	NE SE	1980 FSL, 659 FEL	2/28/2003
599 M1	25091213670000	I. Metvedt 2	37N-58E-6	SW SE	573 FSL, 2377 FEL	6/30/1989
599 M1	25091051700000	E. Eggen Unit 1	37N-58E-7	NE NW	660 FNL, 1878 FWL	11/30/1994
599 M1	25091213790000	B.D. Knudson 3	37N-58E-7	SW SE	660 FSL, 1982 FEL	7/31/1987
599 M1	25091211200000	WSW 2-D	37N-58E-7	NE NE	453 FNL, 717 FEL	-----
599 M1	25091213610000	E. Westgaard 4-2	37N-58E-8	NE NW	660 FNL, 1982 FWL	7/31/1994
599 M1	25091051730000	B. Eckness 1	37N-58E-10	NE NE	660 FNL, 512 FEL	9/30/2012
599 M1	25091051460000	P. Solberg 1	37N-58E-18	NE SW	1905 FSL, 1989 FWL	8/31/1992
599 M1	25091212780000	P. Solberg 7	37N-58E-18	SW SW	660 FSL, 660 FWL	-----

599 M1	25091211050000	C. Solberg 5	37N-58E-19	NE SW	2228 FSL, 2224 FWL	6/30/2009
599 M1	25091210950000	P. Solberg 6	37N-58E-19	NE NW	660 FNL, 1982 FWL	12/31/1998
599 M1	25091214150000	P. Solberg 8	37N-58E-19	SW NW	1980 FNL, 660 FWL	4/30/1995
599 M1	25091211010000	Ferguson 2	37N-58E-20	NE SE	1980 FSL, 660 FEL	4/30/2013
599 M1	25091210820000	C. Solberg 4	37N-58E-30	NE NW	661 FNL, 1907 FWL	4/30/2013
599 M1	25091217940000	Solberg 12H	37N-58E-30	NW NE	732 FNL, 1980 FEL	4/30/2013
599/U1	UIC Limited Bond					Last Non-Zero
599 U1	25091214910000	Dwyer Unit 7-W03	32N-58E-13	NW NE	1300 FNL, 1980 FEL	7/31/2017
599 U1	25091212880000	Dwyer Unit 702	32N-58E-13	SW NE	1980 FNL, 1980 FEL	8/31/2015
599 U1	25091050210000	Dwyer 3-1	32N-59E-19	SE SE	660 FSL, 660 FEL	9/30/2015
599 U1	25091050890000	Hjelm 1	36N-58E-32	NW SE	1780 FSL, 1930 FEL	3/31/2012
599 U1	25091051600000	Nels A. Ward 2	37N-57E-12	NE SW	1980 FSL, 1907 FWL	11/30/2015
599 U1	25091211130000	Joyes State 4	37N-57E-16	NE NW	660 FNL, 1940 FWL	8/31/2012
599 U1	25091052930000	A.E. Joyes 1	37N-57E-21	NE NW	660 FNL, 1980 FWL	8/31/2015
599 U1	25091051810000	O. Anderson 1	37N-58E-3	NE SW	1980 FSL, 1780 FWL	11/30/2015
599 U1	25091051830000	State 2	37N-58E-4	NE SW	2005 FSL, 1976 FWL	12/31/2015
599 U1	25091051950000	M. Eggen Unit 1	37N-58E-4	NE NE	1416 FNL, 660 FEL	12/31/2015
599 U1	25091051880000	A. Anderson 1	37N-58E-5	NE SW	1980 FSL, 2180 FWL	10/31/2007
599 U1	25091051910000	A. Anderson 4	37N-58E-5	NE NE	1506 FNL, 660 FEL	11/30/2015
599 U1	25091213780000	B.D. Knudson 4	37N-58E-7	NE SE	1980 FSL, 660 FEL	7/31/1988
599 U1	25091051610000	Haugen 2-3	37N-58E-7	NE SW	1980 FSL, 1979 FWL	2/29/2012
599 U1	25091051740000	E. Westgaard 4-1	37N-58E-8	NE NE	660 FNL, 660 FEL	-----

1 Operator(s) Included in Report

**MONTANA BOARD OF OIL AND GAS CONSERVATION
FINANCIAL STATEMENT
As of 6/9/22
Fiscal Year 2022: Percent of Year Elapsed - 94%**

		Budget	Expends	%	Remaining
Regulatory	Personal Services	1,238,381	989,014	80	249,367
UIC	Personal Services	<u>271,842</u>	<u>253,147</u>	93	<u>18,695</u>
	Total	1,510,223	1,242,161	82	268,062
Regulatory	Equipment & Assets	46,371	-	-	46,371
UIC	Equipment & Assets	<u>10,179</u>	<u>-</u>	-	<u>10,179</u>
	Total	56,550	-	-	56,550
Regulatory	Operating Expenses:				
	Contracted Services	166,427	54,731	33	111,696
	Supplies & Materials	49,938	46,435	93	3,503
	Communication	58,303	42,634	73	15,669
	Travel	34,276	11,085	32	23,191
	Rent	29,602	22,165	75	7,437
	Utilities	19,762	13,098	66	6,664
	Repair/Maintenance	33,292	31,352	94	1,940
	Other Expenses	<u>23,979</u>	<u>23,518</u>	98	<u>461</u>
	Total Operating Expenses	415,579	245,019	59	170,560
UIC	Operating Expenses:				
	Contracted Services	27,555	10,064	37	17,491
	Supplies & Materials	10,962	13,568	124	(2,606)
	Communication	12,798	8,346	65	4,452
	Travel	7,524	2,557	34	4,967
	Rent	6,498	4,866	75	1,632
	Utilities	4,338	2,521	58	1,817
	Repair/Maintenance	7,308	6,590	90	718
	Other Expenses	<u>5,264</u>	<u>8,013</u>	152	<u>(2,749)</u>
	Total Operating Expenses	82,247	56,527	69	25,720
	Total	497,826	301,545	61	196,281

	Budget	Expends	%	Remaining
Carryforward FY20				
Personal Services	264	-	0	264
Operating Expenses	264	-	0	264
Equipment & Assests	-	-	0	-
Total	528	-	0	528
Carryforward FY21				
Personal Services	55,270	-	0	55,270
Operating Expenses	55,270	-	0	55,270
Equipment & Assests	<u>55,271</u>	<u>-</u>	<u>0</u>	<u>55,271</u>
Total	165,811	-	0	165,811

Funding Breakout	2022 Total Budget	2022 Total Expends	%
State Special	2,064,599	1,543,707	75
Federal 2022 UIC (10-1-2021 to 9-30-2022)	106,749	-	0
Total	2,171,348	1,543,707	71

REVENUE INTO STATE SPECIAL REVENUE ACCOUNT

	FY 22	FY 21
Oil & Gas Production Tax	\$ 1,749,206	\$ 2,272,948
Oil Production Tax	1,557,372	2,073,509
Gas Production Tax	191,834	199,438
Drilling Permit Fees	13,700	19,025
UIC Permit Fees	237,800	237,700
Interest on Investments	7,865	6,251
Copies of Documents	903	536
Miscellaneous Reimbursements	-	-
TOTAL	\$ 2,009,474	\$ 2,536,460

REVENUE INTO DAMAGE MITIGATION ACCOUNT

	FY 22
RIT Investment Earnings:	\$ 247,351
July	-
August	27,126
September	20,838
October	23,519
November	27,779
December	20,564
January	24,103
February	28,189
March	20,008
April	26,853
May	28,372
June	-
Bond Forfeitures:	128,500
Interest on Investments	525
TOTAL	\$ 376,376

INVESTMENT ACCOUNT BALANCES

Regulatory Account	\$ 4,119,073
Damage Mitigation Account	\$ 332,668

REVENUE INTO GENERAL FUND FROM FINES

		FY 22
COWRY ENTERPRISES LTD	7/9/2021	\$ 60
KTS TRUCKING	7/16/2021	60
BRAINSTORM ENERGY INC	8/13/2021	220
BIG SKY ENERGY LLC	9/10/2021	460
DRAWINGS LLC	10/1/2021	180
MLB LLC	10/1/2021	120
ZOETIC CORPORATION	10/7/2021	1,000
BIG SKY ENERGY LLC	10/15/2021	460
UNITED STATES ENERGY CORP	11/5/2021	70
CHACO ENERGY CO	11/5/2021	70
D90 ENERGY LLC	11/17/2021	910
HERCO LLC	12/22/2021	60
TOWN OF SACO	12/28/2021	60
LOST CREEK ASSOCIATES LLC	12/28/2021	2,000
DIAMOND HALO GROUP LLC	1/3/2022	60
YELLOWSTONE PETROLEUMS INC	1/10/2022	100
D90 ENERGY LLC	2/3/2022	910
1776 LLC	2/9/2022	120
ENNEBERG OIL AND GAS LLC	2/14/2022	240
HAWLEY MERRILL	2/14/2022	120
HAWLEY HYDROCARBONS LLP	2/14/2022	120
HOOVER COMPLIANCE CONSULTING	2/17/2022	120
HESLA OIL LLC	2/17/2022	120
BLACK GOLD ENERGY RICHLAND FACILITY	2/18/2022	140
BLACK GOLD ENERGY	2/18/2022	140
DIGITAL OPERATING COMPANY	2/18/2022	560
HOF LAND JAMES D	2/25/2022	90
BIG SKY ENERGY LLC	2/25/2022	460
HAWLEY HYDROCARBONS LLP	3/25/2022	200
THREE FORKS RESOURCES LLC	5/9/2022	1,000
WESTERN MEADOWLARK RESOURCES LLC	5/12/2022	150
MONTANA LAND AND MINERAL COMPANY	6/3/2022	140
TOTAL		\$ 10,520

DAMAGE MITIGATION CONTRACTS

<u>Name</u>	<u>Authorized Amt</u>	<u>Expended</u>	<u>Balance</u>	<u>Status</u>	<u>Expiration Date</u>
P&R TOI MT AG Station 28-41 PA Well	\$ 61,000	\$ -	\$ -	Under Contract	9/30/2022
TOTAL	\$ 61,000	\$ -	\$ -		

CONTRACTS

<u>Name</u>	<u>Authorized Amt</u>	<u>Expended</u>	<u>Balance</u>	<u>Status</u>	<u>Expiration Date</u>
Agency Legal Services 2022	\$ 70,000	\$ 32,195	\$ 37,805	Under Contract	6/30/2022
Billings Janitorial	9,425	6,676	2,749	Under Contract	9/30/2022
Billings Lawn and Snow Removal	12,000	7,504	4,496	Under Contract	9/30/2022
TOTAL	\$ 91,425	\$ 46,375	\$ 45,050		

Agency Legal Services Expenditures in FY22	
<u>Case</u>	<u>Amt Spent</u>
BOGC Duties	\$ 21,788
Bison	7,687
Pheonix Capital	2,720
Total	\$ 32,195

Montana Board of Oil and Gas Conservation Summary of Bond Activity

4/13/2022 Through 6/14/2022

Approved

Falcon Midstream Services LLC Houston TX	904 T3	Approved	6/8/2022
		Amount:	\$10,000.00
		Purpose:	UIC Single Well Bond
Surety Bond	\$10,000.00	Liberty Mutual Insurance Company	ACT
Falcon Midstream Services LLC Houston TX	904 T2	Approved	6/8/2022
		Amount:	\$10,000.00
		Purpose:	UIC Single Well Bond
Surety Bond	\$10,000.00	Liberty Mutual Insurance Company	ACT
Falcon Midstream Services LLC Houston TX	904 T1	Approved	6/8/2022
		Amount:	\$10,000.00
		Purpose:	UIC Single Well Bond
Surety Bond	\$10,000.00	Liberty Mutual Insurance Company	ACT
Ridge Energy, LLC McKinney TX	913 T3	Approved	4/27/2022
		Amount:	\$10,000.00
		Purpose:	UIC Single Well Bond
Certificate of Deposit	\$10,000.00	Stockman Bank of Montana	ACT
Ridge Energy, LLC McKinney TX	913 T2	Approved	4/27/2022
		Amount:	\$10,000.00
		Purpose:	UIC Single Well Bond
Certificate of Deposit	\$10,000.00	Stockman Bank of Montana	ACT
Ridge Energy, LLC McKinney TX	913 M1	Approved	4/27/2022
		Amount:	\$50,000.00
		Purpose:	Multiple Well Bond
Certificate of Deposit	\$50,000.00	Stockman Bank of Montana	ACT
Ridge Energy, LLC McKinney TX	913 T1	Approved	4/27/2022
		Amount:	\$10,000.00
		Purpose:	UIC Single Well Bond
Certificate of Deposit	\$10,000.00	Stockman Bank of Montana	ACT

Canceled

Cowry Enterprises, Ltd. Littleton CO	8 T2	Canceled	5/5/2022
		Amount:	\$10,000.00
		Purpose:	UIC Single Well Bond
Cowry Enterprises, Ltd. Littleton CO	8 M2	Canceled	5/5/2022
		Amount:	\$50,000.00
		Purpose:	Multiple Well Bond
Cowry Enterprises, Ltd. Littleton CO	8 T3	Canceled	5/5/2022
		Amount:	\$10,000.00
		Purpose:	UIC Single Well Bond
Cowry Enterprises, Ltd. Littleton CO	8 T1	Canceled	5/5/2022
		Amount:	\$10,000.00
		Purpose:	UIC Single Well Bond

Montana Board of Oil and Gas Conservation Summary of Bond Activity

4/13/2022 Through 6/14/2022

Canceled

Equinor Energy LP Austin TX	483 M1	Canceled	5/3/2022
		Amount:	\$50,000.00
		Purpose:	Multiple Well Bond
Equinor Pipelines LLC Stamford CT	811 T1	Canceled	5/3/2022
		Amount:	\$10,000.00
		Purpose:	UIC Single Well Bond
Equinor Pipelines LLC Stamford CT	811 T2	Canceled	5/3/2022
		Amount:	\$10,000.00
		Purpose:	UIC Single Well Bond
Onshore Holdings LLC Austin TX	704 M1	Canceled	5/4/2022
		Amount:	\$50,000.00
		Purpose:	Multiple Well Bond
Pioneer Natural Resources USA, Inc. Irving TX	322 L1	Canceled	6/7/2022
		Amount:	\$6,000.00
		Purpose:	Limited Bond
Tyler Rockies Exploration Ltd Tyler TX	101 M2	Canceled	4/19/2022
		Amount:	\$50,000.00
		Purpose:	Multiple Well Bond
Tyler Rockies Exploration Ltd Tyler TX	101 U1	Canceled	4/19/2022
		Amount:	\$45,000.00
		Purpose:	UIC Limited Bond

Forfeited

Kykuit Resources, LLC Winifred MT	557 M1	Forfeited	6/6/2022
		Amount:	\$50,000.00
		Purpose:	Multiple Well Bond
Lowrance-Tyner Operating Conrad MT	197 T1	Forfeited	5/2/2022
		Amount:	\$3,500.00
		Purpose:	UIC Single Well Bond
Pamect Oil, Keith E. Tyner Db Conrad MT	7941 T1	Forfeited	5/2/2022
		Amount:	\$3,500.00
		Purpose:	UIC Single Well Bond
Pamect Oil, Keith E. Tyner Db Conrad MT	7941 B1	Forfeited	5/16/2022
		Amount:	\$25,000.00
		Purpose:	Blanket Bond

Forfeiture Ordered

Forward Energy, LLC Mt. Juliet TN	492 G5	Forfeiture Ordered	4/14/2022
		Amount:	\$10,000.00
		Purpose:	Single Well Bond
Certificate of Deposit	\$10,000.00	FIRST INTERSTATE BANK	ACT

Montana Board of Oil and Gas Conservation Summary of Bond Activity

4/13/2022 Through 6/14/2022

Forfeiture Ordered

Forward Energy, LLC Mt. Juliet TN	492 G4		Forfeiture Ordered Amount: Purpose:	4/14/2022 \$10,000.00 Single Well Bond
Certificate of Deposit	\$10,000.00	FIRST INTERSTATE BANK		ACT
Forward Energy, LLC Mt. Juliet TN	492 G3		Forfeiture Ordered Amount: Purpose:	4/14/2022 \$1,500.00 Single Well Bond
Certificate of Deposit	\$1,500.00	US BANK - BILLINGS		ACT
Janssen Gas Volborg MT	3865 B1		Forfeiture Ordered Amount: Purpose:	4/14/2022 \$10,000.00 Blanket Bond
Certificate of Deposit	\$10,000.00	1STSECURITY BANK&TRUST/MILES C		ACT
Powder River Gas, LLC Woodland Hills CA	288 M3		Forfeiture Ordered Amount: Purpose:	4/14/2022 \$50,000.00 Multiple Well Bond
Surety Bond	\$50,000.00	Hudson Insurance Company		ACT
Powers Energy Inc.	6187 W1		Forfeiture Ordered Amount: Purpose:	4/14/2022 \$5,000.00 One-Well Bond
Certificate of Deposit	\$5,000.00	1ST INTERSTATE BANK OF BILLINGS		ACT

Letter Sent

Lowrance-Tyner Operating Conrad MT	197 T1		Letter Sent Amount: Purpose:	4/20/2022 \$3,500.00 UIC Single Well Bond
Parnect Oil, Keith E. Tyner Db Conrad MT	7941 T1		Letter Sent Amount: Purpose:	4/20/2022 \$3,500.00 UIC Single Well Bond
Parnect Oil, Keith E. Tyner Db Conrad MT	7941 B1		Letter Sent Amount: Purpose:	4/20/2022 \$25,000.00 Blanket Bond

Incident Report

Company	Responsibility	Date	Incident	Oil Released	Water Released	Source	Contained	Latitude	Longitude	County	T-R-S
Denbury Onshore, LLC	FED	4/13/2022	Fire			Treater	No	46.09083	-104.08194	Fallon	4N-61E-24 NESE
Montana Energy Company, LLC	BOG	4/16/2022	Spill or Release		20 Barrels	Flow Line - Injection	No	46.61426	-108.37840	Musselshell	10N-27E-19 SENW
Denbury Onshore, LLC	BOG	4/19/2022	Spill or Release		258 Barrels	Flow Line - Injection	No	46.45206	-104.32063	Fallon	8N-59E-14 NWNW
Stalking Horse Energy, LLC	BOG	4/22/2022	Spill or Release	25 Barrels	25 Barrels	Pump Failure	Yes	47.81415	-104.31767	Richland	24N-58E-30 SENE
White Rock Oil & Gas, LLC	BOG	4/22/2022	Spill or Release	5 Barrels	10 Barrels	Treater	No	47.65765	-104.25824	Richland	22N-58E-22 NWNE
Continental Resources Inc	BOG	4/24/2022	Spill or Release	20 Barrels	15 Barrels	Treater	No	47.73274	-104.52625	Richland	23N-56E-22 SWSW
Bakken Water, LLC	BOG	4/29/2022	Spill or Release	4 Barrels	197 Barrels	Pump Failure	Yes	47.81771	-104.18282	Richland	24N-59E-29 NWNW
Denbury Onshore, LLC	BOG	5/5/2022	Spill or Release	10 Gallons		Tank or Tank Battery	No	46.09139	-104.08389	Fallon	4N-61E-24 NESE
Denbury Onshore, LLC	BOG	5/5/2022	Spill or Release		20 Barrels	Flow Line - Injection	No	46.31722	-104.15389	Fallon	7N-60E-36 SWNW
Denbury Onshore, LLC	BOG	5/16/2022	Spill or Release		100 Barrels	Well Head	Yes	46.70464	-104.53034	Wibaux	11N-57E-15 NWSE
Denbury Onshore, LLC	BOG	5/31/2022	Fire	15 Gallons		Flare Pit	No	46.98000	-104.79194	Dawson	14N-55E-8 SWSW
Denbury Onshore, LLC	BOG	6/1/2022	Spill or Release		100 Barrels	Flow Line - Production	No	46.55624	-104.38233	Fallon	9N-58E-2 SWSE
Samson Oil and Gas USA, Inc.	BOG	6/1/2022	Spill or Release	15 Barrels		Well Head	Yes	48.30070	-104.21506	Roosevelt	29N-58E-5 NWNW
Denbury Onshore, LLC	BOG	6/4/2022	Spill or Release		100 Barrels	Flow Line - Production	No	46.36687	-104.23685	Fallon	7N-60E-17 NWNW

ALL APPLICATIONS, 6/16/2022

Docket	Applicant	Status	Request
51-2022	White Rock Oil & Gas, LLC		Well Density
52-2022	White Rock Oil & Gas, LLC		Other
53-2022	Kraken Oil & Gas LLC		Temp. Spacing
54-2022	Kraken Oil & Gas LLC		Well Density
55-2022	Behm Energy, Inc.		Temp. Spacing
56-2022	Lonewolf Operating, LLC		Spacing
57-2022	Denbury Onshore, LLC		Exception - Drilling
58-2022	Denbury Onshore, LLC		Enhanced Recovery
59-2022	Vecta Oil & Gas, Ltd.		Temp. Spacing
60-2022	Vecta Oil & Gas, Ltd.		Temp. Spacing
61-2022	Vecta Oil & Gas, Ltd.		Temp. Spacing
62-2022	D & H Energy, LLC	Default	Class II Permit
63-2022	Cardinal Oil, LLC		Class II Permit
99-2021	Falcon Energy Partners LLC		Spacing
100-2021	Falcon Energy Partners LLC		Pooling
28-2022	Kraken Oil & Gas LLC	Withdrawn	Well Density
64-2022	Empire North Dakota LLC		Change of Operator
65-2022	W-H Productions LLC	Withdrawn	Change of Operator
40-2022	Chelin LLC		Change of Operator
66-2022	Justice SWD, LLC	Dismissed	Show-Cause
67-2022	Three Forks Resources, LLC	Dismissed	Show-Cause
68-2022	Bluebird Energy, LLC		Show-Cause
69-2022	Cardinal Oil, LLC		Show-Cause
70-2022	Big Sky Energy, LLC	Dismissed	Show-Cause
71-2022	Montana Land & Mineral Co.	Dismissed	Show-Cause
72-2022	Seymour, James & Lorraine		Show-Cause
73-2022	Strategic Holdings LLC	Dismissed	Show-Cause
108-2021	Black Gold Energy Resource Development, LLC		Show-Cause
109-2021	Black Gold Energy Richland Facility, Inc.		Show-Cause
43-2022	Butler Petroleum LLC		Show-Cause

APPLICATIONS TO HEAR, 6/16/2022

(In Order of Hearing)

Docket	Applicant	Status	Request
51-2022	White Rock Oil & Gas, LLC		Well Density
52-2022	White Rock Oil & Gas, LLC		Other
53-2022	Kraken Oil & Gas LLC		Temp. Spacing
54-2022	Kraken Oil & Gas LLC		Well Density
55-2022	Behm Energy, Inc.		Temp. Spacing
56-2022	Lonewolf Operating, LLC		Spacing
57-2022	Denbury Onshore, LLC		Exception - Drilling
58-2022	Denbury Onshore, LLC		Enhanced Recovery
61-2022	Vecta Oil & Gas, Ltd.		Temp. Spacing
64-2022	Empire North Dakota LLC		Change of Operator
59-2022	Vecta Oil & Gas, Ltd.		Temp. Spacing
60-2022	Vecta Oil & Gas, Ltd.		Temp. Spacing
40-2022	Chelin LLC		Change of Operator
99-2021	Falcon Energy Partners LLC		Spacing
100-2021	Falcon Energy Partners LLC		Pooling
68-2022	Bluebird Energy, LLC		Show-Cause
69-2022	Cardinal Oil, LLC		Show-Cause
63-2022	Cardinal Oil, LLC		Class II Permit
72-2022	Seymour, James & Lorraine		Show-Cause
108-2021	Black Gold Energy Resource Development, LLC		Show-Cause
109-2021	Black Gold Energy Richland Facility, Inc.		Show-Cause
43-2022	Butler Petroleum LLC		Show-Cause

DEFAULT DOCKET, 6/16/2022

Docket	Applicant	Status	Request
62-2022	D & H Energy, LLC	Default	Class II Permit

Docket Summary

6/16/2022 Hearing

51-2022	White Rock Oil & Gas, LLC	Exception to recomplete the Federal 15-30 well (SWSE) in the Madison Group, as an additional producing well in the spacing unit comprised of 23N-60E-30: S2, exception to Order 51-1979.	<i>Recomplete from Stony Mountain to Madison. Delineation for base last salt to top of Devonian.</i>	<input type="checkbox"/>
52-2022	White Rock Oil & Gas, LLC	Provide an update of its activities including any reduction in abandonment liability by either plugging wells or returning wells to production, as required by Board Order 92-2021.		<input type="checkbox"/>
53-2022	Kraken Oil & Gas LLC	Designate overlapping temporary spacing unit, Bakken/Three Forks Formation, 26N-57E 4: all, 9: all, and 27N-57E 33: all, 200' heel/toe setbacks and 500' lateral setbacks. Apply for permanent spacing within 90 days of completion. Operations must commence within one year of date of order. Amend Board Order 40-2017 to clarify said order is limited to the Shayla 34-33 #1H well. Vacate Order 376-2012 (Exception to Order 380-2011 as it pertains to 26N-57E-4: all, 9: all to authorize 200' toe/heel and 500' lateral setbacks. Lateral setback reverts to 1320' one year from date of hearing.)	<i>Sections 4 & 9, Order 380-2011</i>	<input type="checkbox"/>
54-2022	Kraken Oil & Gas LLC	Authorize the drilling of up to three additional horizontal wells, overlapping temporary spacing unit, Bakken/Three Forks Formation, 26N-57E-4: all, 9: all, and 27N-57E-33: all, 200' heel/toe setbacks and 500' lateral setbacks.		<input type="checkbox"/>
55-2022	Behm Energy, Inc.	Temporary spacing unit, Sawtooth Formation test well, 35N-20E-27: SESWNE, SWSENE, NENWSE, NWNENE, 330 setbacks.		<input type="checkbox"/>
56-2022	Lonewolf Operating, LLC	Permanent spacing unit, Sawtooth Formation, T35N-R21E-32: E2NESW and W2NWSE (Firemoon #11-32).	<i>Temporary spacing unit, Order 59-2021.</i>	<input type="checkbox"/>
57-2022	Denbury Onshore, LLC	Exception to statewide drilling and temporary spacing rules, Deadwood Formation test well, 4N-62E: 17, 440' FNL, 450' FEL; vacate order 41-2021 (Re-enter and deepen the Unit 21-17 well, T4N-R62E-17: 435' FNL, 2200' FWL (NENW), (API #25-025-05044) to evaluate the Deadwood Sands).		<input type="checkbox"/>
58-2022	Denbury Onshore, LLC	Pilot Enhanced Recovery Project, Madison Formation, 10N-58E-8: S2SE, SESW, 9: SWSW, 16: W2, 17: E2, E2W2. Vacate Order 87-2021 (Pilot Enhanced Recovery Project, Madison Group, 10N-58E-8: SESW, SWSE, 16: SWSW, 17: W2NE, SENE, E2NW, NESW, SE, 20: NENE, 21: NWNW).		<input type="checkbox"/>
59-2022	Vecta Oil & Gas, Ltd.	Temporary spacing unit, Nisku Formation test well, 30N-48E-17: W2SW, 18: E2SE. Well to be located approximately 2,340' FSL and 383' FEL in Section 18.	<i>Tule Creek Field - 160-acre spacing units, well in 1,320' square in center of quarter section.</i> <i>Proposed well very close to northern boundary of the TSU; alternate spacing unit may be appropriate depending upon applicant's seismic data, or drill, suspend payment until spaced?</i> <i>Overlaps two Darrah spacing units?</i>	<input type="checkbox"/>

60-2022	Vecta Oil & Gas, Ltd.	Temporary spacing unit, Nisku Formation test well, 31N-48E-30: SE. Well to be located approximately 576' FSL and 1,443' FEL.		<i>More appropriate to grant as an exception to East Benrud Field rules to drill the well at that location in the existing spacing unit comprised of the SE/4</i>	<input type="checkbox"/>
61-2022	Vecta Oil & Gas, Ltd.	Temporary spacing unit, Nisku Formation test well, 30N-48E-8: S2SW, 17: N2NW. Well to be located approximately 182' FNL and 1,023' FWL in Section 17.			<input type="checkbox"/>
62-2022	D & H Energy, LLC	Convert the Anderson #1 well, 35N-1W-26: NESE, (API # 101-22495) to a Class II injection well, Madison Formation.	Default		<input type="checkbox"/>
63-2022	Cardinal Oil, LLC	Convert the Allen 10-31 22-27-H1 well, 10N-31E-22: SESE, (API # 087-21750) to a Class II injection well, Heath Formation.	Default		<input type="checkbox"/>
64-2022	Empire North Dakota LLC	Change of operator from Unit Petroleum Company to Empire North Dakota LLC.			<input type="checkbox"/>
65-2022	W-H Productions LLC	Change of operator from Robert Hawkins, Inc. to W-H Productions LLC.	Withdrawn	<i>Application withdrawn, email received 6/8/22.</i>	<input type="checkbox"/>
99-2021	Falcon Energy Partners LLC	Permanent spacing unit, Middle Bakken Formation, 36N-3W-13: NENW (#1 Simmes Ranch 21-13).		<i>Continued to June hearing, email received 3/24/22.</i> <i>Continued to April hearing, email received 2/7/22.</i> <i>Continued to February hearing, email received 11/19/21.</i>	<input type="checkbox"/>
100-2021	Falcon Energy Partners LLC	Pooling, permanent spacing unit, Middle Bakken Formation, 36N-3W-13: NENW (#1 Simmes Ranch 21-13).		<i>Continued to June hearing, email received 3/24/22.</i> <i>Continued to April hearing, email received 2/7/22.</i> <i>Continued to February hearing, email received 11/19/21.</i>	<input type="checkbox"/>
28-2022	Kraken Oil & Gas LLC	Authorize the drilling of up to three additional wells in permanent spacing unit, Bakken/Three Forks Formation, 27N-57E-14: all, 23: all, 200' heel/toe, 500' lateral setbacks.	Withdrawn	<i>Continued to June hearing, email received 4/5/22.</i> <i>Application withdrawn, email received 6/7/22.</i>	<input type="checkbox"/>
40-2022	Chelin LLC	Change of operator from Falcon Energy Partners LLC and MLB, LLC to Chelin LLC.		<i>Continued to June hearing, email received 3/24/22.</i> <i>Per Chelin, a Lyon well will be added to the docket.</i>	<input type="checkbox"/>

66-2022	Justice SWD, LLC	Show Cause: why additional penalties should not be imposed for failure to pay the \$100 fine assessed by the Board for late payment of the annual injection well fee for the Christensen Trust 15-9 saltwater disposal well. Board staff has authority to dismiss the docket if Justice SWD, LLC achieves compliance prior to the June 16, 2022, public hearing	Dismissed	5/20/22 paid the outstanding fine.	<input type="checkbox"/>
67-2022	Three Forks Resources, LLC	Show Cause: why additional penalties should not be imposed for failure to plug and abandon the Utopia 33-13 injection well, API # 25-051-21596, located in the W $\frac{1}{4}$ NW $\frac{1}{4}$ SE $\frac{1}{4}$ of Section 13, T33N-R4E, Liberty County, Montana. Board staff has authority to dismiss the docket if Three Forks Resources, LLC achieves compliance prior to the June 16, 2022, public hearing.	Dismissed	Well has been plugged.	<input type="checkbox"/>
68-2022	Bluebird Energy, LLC	Show Cause: why additional penalties should not be considered for failure to remedy the field violations at its Flying Monkey 1H well, Section 14, T10N-R34E, Rosebud County, Montana.			<input type="checkbox"/>
69-2022	Cardinal Oil, LLC	Show Cause: why additional penalties should not be considered for failure to remedy the field violations at its Allen 10-31 23-27-H1 well, Section 22, T10N-R31E, Rosebud County, Montana.			<input type="checkbox"/>
70-2022	Big Sky Energy, LLC	Show Cause: failure to file injection reports and pay administrative fees.	Dismissed	The delinquent reports/fee was received. Docket administratively dismissed in accordance with policy.	<input type="checkbox"/>
71-2022	Montana Land & Mineral Co.	Show Cause: failure to file production reports and pay administrative fees.	Dismissed	The delinquent reports/fee was received. Docket administratively dismissed in accordance with policy.	<input type="checkbox"/>
72-2022	Seymour, James & Lorraine	Show Cause: failure to pay administrative fees assessed for delinquent reporting.			<input type="checkbox"/>
73-2022	Strategic Holdings LLC	Show Cause: failure to pay administrative fees assessed for delinquent reporting.	Dismissed	The delinquent fee was received. Docket administratively dismissed in accordance with policy.	<input type="checkbox"/>
108-2021	Black Gold Energy Resource Development, LLC	Show Cause: why penalties should not be considered for failure to remedy the field violations at its Indian Mound 1 well, Section 15, T23N-R55E, Richland County, Montana.			<input type="checkbox"/>
109-2021	Black Gold Energy Richland Facility, Inc.	Show Cause: why penalties should not be considered for failure to remedy the field violations at its Velma SWD 1-10 well, Section 10, T23N-R58E, Richland County, Montana.			<input type="checkbox"/>
43-2022	Butler Petroleum LLC	Show Cause: why it should not be required to plug and abandon its EPU 120 well, API # 25-085-21820, located in the SW $\frac{1}{4}$ NW $\frac{1}{4}$ of Section 29, T29N-R51E, Roosevelt County, Montana.			<input type="checkbox"/>

GAS FLARING

June 15, 2022

Flaring Requests

Summary

There are three wells flaring over 100 MCFG per day based on current production numbers.

There are three exceptions requested at this time.

Petro-Hunt –

Borntrager 2C-2-1 – API #25-021-21193, 19N-54E-2

1. Flaring 116 MCF/D.
2. Completed: 9/2012.
3. Proximity to market: >25 miles pipeline.
4. Estimated gas price at market: ~\$2/MCF.
5. Estimated cost of marketing the gas: ~\$3.2 million.
6. Flaring alternatives: None.
7. Amount of gas used in lease operations: 7 MCF/D.
8. Justification to flare: Uneconomic to connect due to lack of infrastructure in the area.

Walter Senner 19-54 – API #25-021-21192, 19N-54E-18

1. Flaring 120 MCF/D.
2. Completed: 8/2012.
3. Proximity to market: >25 miles pipeline.
4. Estimated gas price at market: ~\$2/MCF.
5. Estimated cost of marketing the gas: ~\$3.2 million.
6. Flaring alternatives: None.
7. Amount of gas used in lease operations: 7 MCF/D.
8. Justification to flare: Uneconomic to connect due to lack of infrastructure in the area.

Boje Farms 19-54 – API #25-021-21184, 19N-54E-17

1. Flaring 113 MCF/D.
2. Completed: 2/2011.
3. Proximity to market: >25 miles pipeline.
4. Estimated gas price at market: ~\$2/MCF.
5. Estimated cost of marketing the gas: ~\$3.2 million.
6. Flaring alternatives: None.
7. Amount of gas used in lease operations: 7 MCF/D.
8. Justification to flare: Uneconomic to connect due to lack of infrastructure in the area.

Montana Board of Oil and Gas Conservation
BILLINGS
DIVISION HEADQUARTERS
Administrator #80000

7/2022
Exempt/Geologist
Geologist
#80###

Exempt/Pet
Engineer
Ben Jones

Exempt/UIC
George Hudak
#80040

Exempt
Vacant
#80010

Program Specialist
Jennifer Breton
#80020

Chief Field Inspector
VACANT
#80030

Field Insp. Supervisor
Gary Klotz
#80050

12/2022

Compliance Officer
John Gizicki
#80170

(Production)
Brea Frickle
#20070

Maternity Leave

Admin Assist
Katelyn Bohmer
#80110

Field Inspector
VACANT
#80155

Draftsman
Kris Goll
#80100

Permit Supervisor
Filled - 6/27/2022
#80090

Permit Clerk
Nancy Heinaman
#80160

7/2022

Plentywood
Field
Inspector
Doug
Reidle
#80200

Sidney
Field
Inspector
Russ Utter
#80060

Glendive
Field
Inspector
Sam Thielen
#80190

Southern
Field
Inspector
Jerry Fraser
#80150

Admin Assist II
VACANT
#20345

Admin Assist
VACANT
(1/2)

Vacant Positions

